

卫兰服装纸样

测量蓝虚线尺寸=196x270mm 确定无误再生产

478男士连帽羽绒服 165

款号: 478

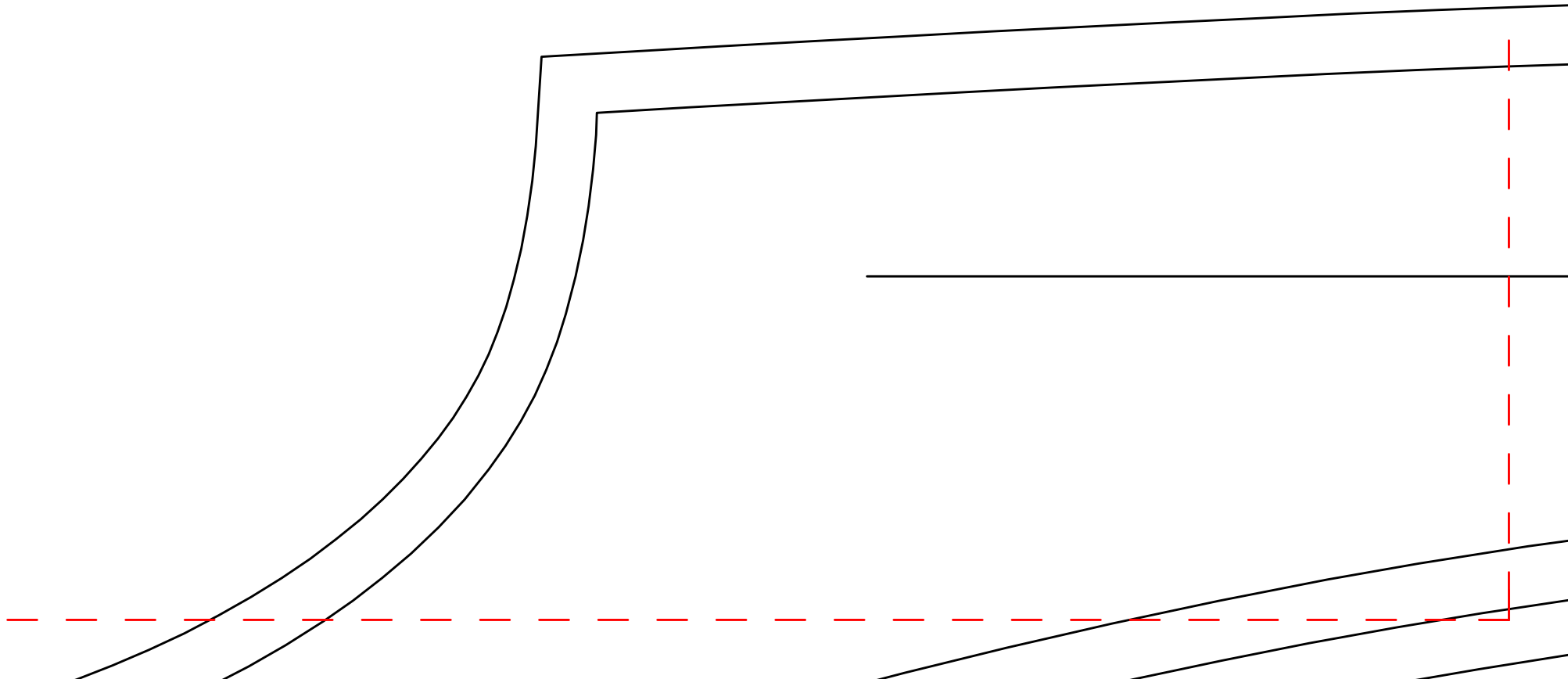
尺码:

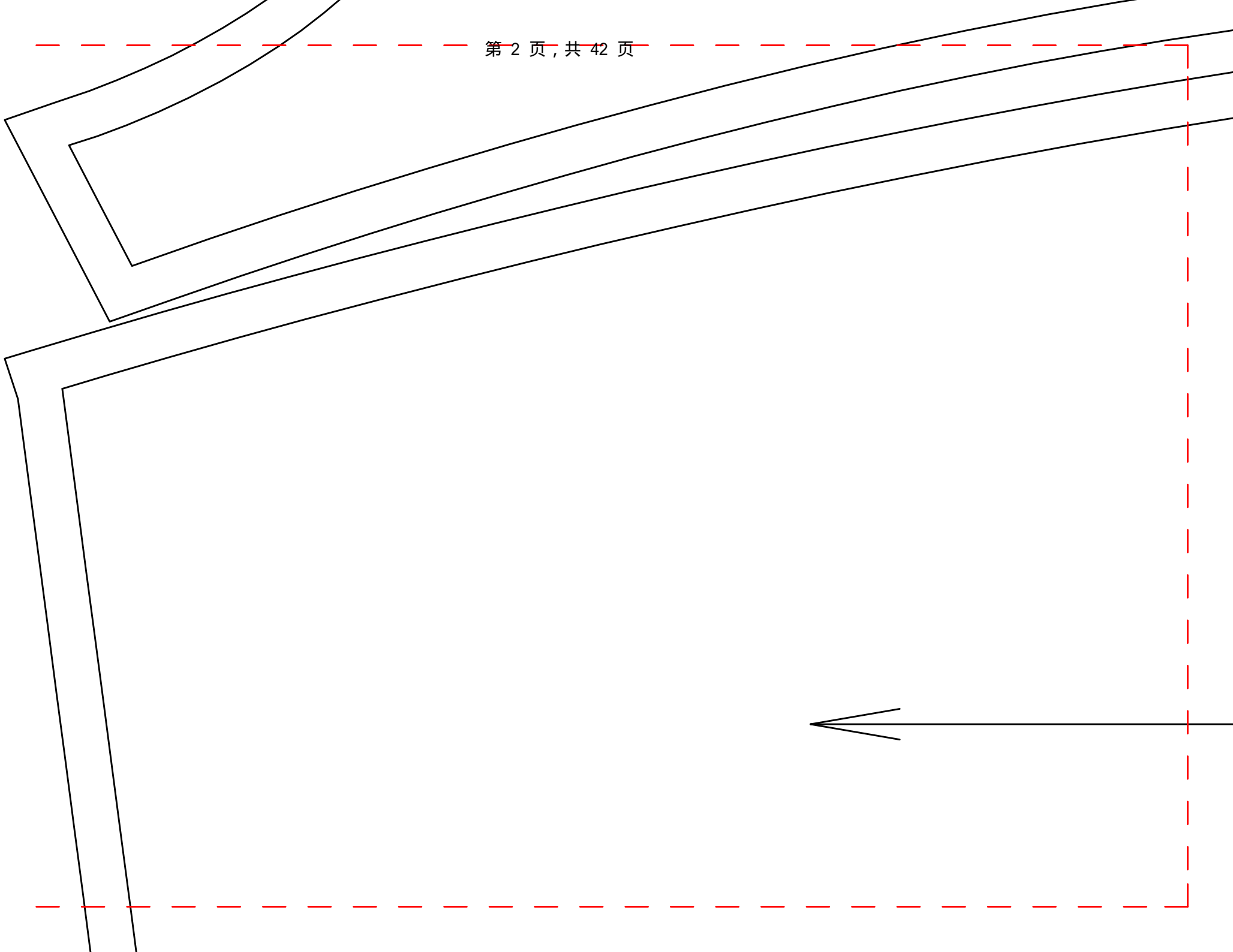


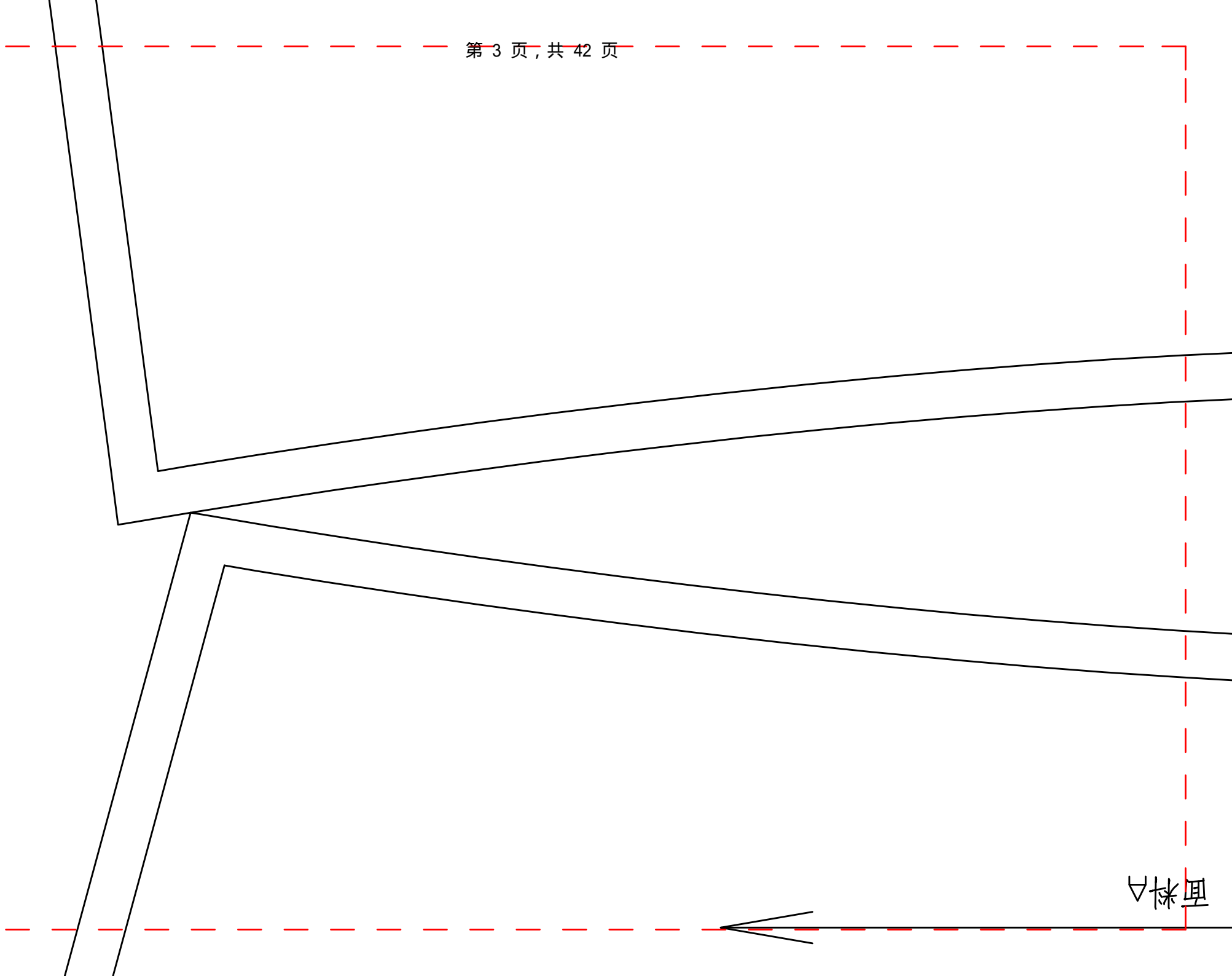
衣服尺寸

部位 \ 尺码	165/88	170/92	175/96	180/100	185/104	190/108	195/112
胸围	110	114	118	122	126	130	134
腰围							
下摆	87	90	93	96	99	102	105
肩宽	45.9	47	48.1	49.2	50.3	51.4	52.5
衣长							
袖肥	39.5	40.9	42.3	43.7	45.1	46.5	48
袖长							
袖口	21.5	22	22.5	23	23.5	24	24.5
卫兰服装纸样铺 (款式、用料) 尺寸表							
面料A	190	192	194	196	198	200	202
罗纹							
里布	128	130	132	134	136	138	140

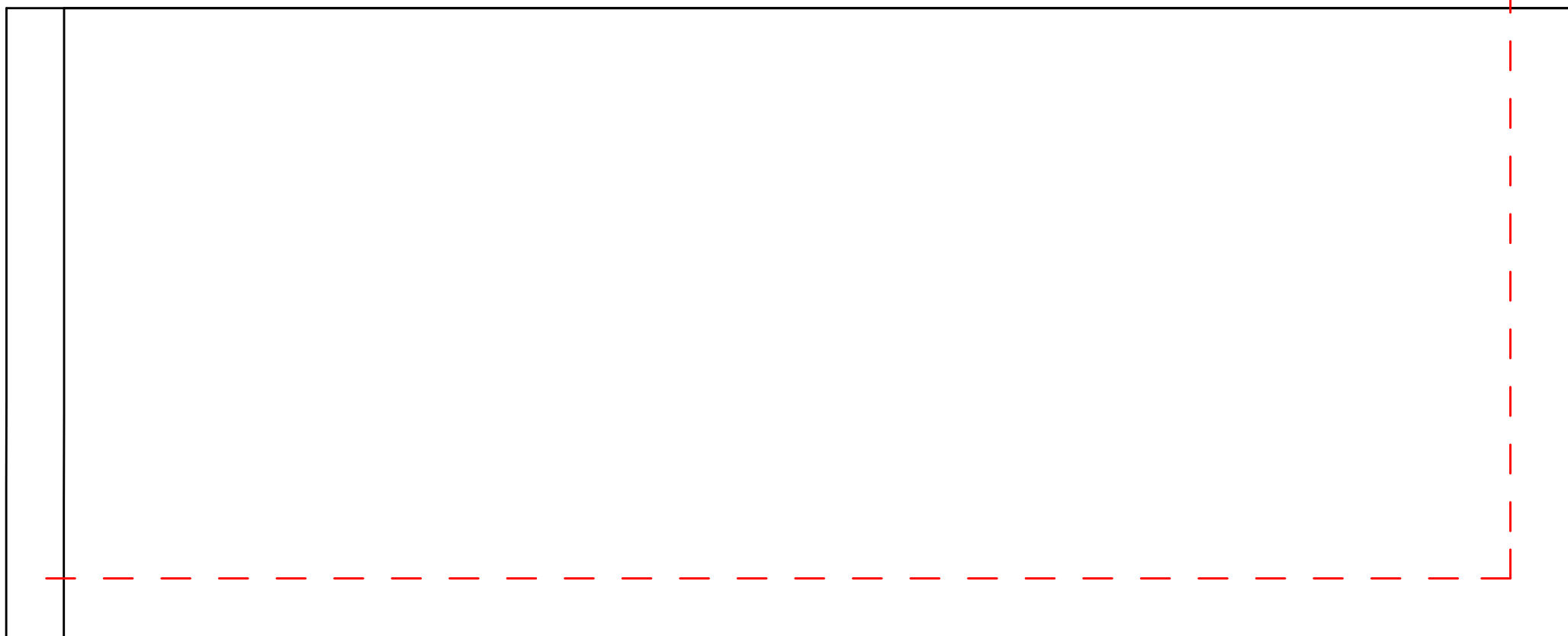
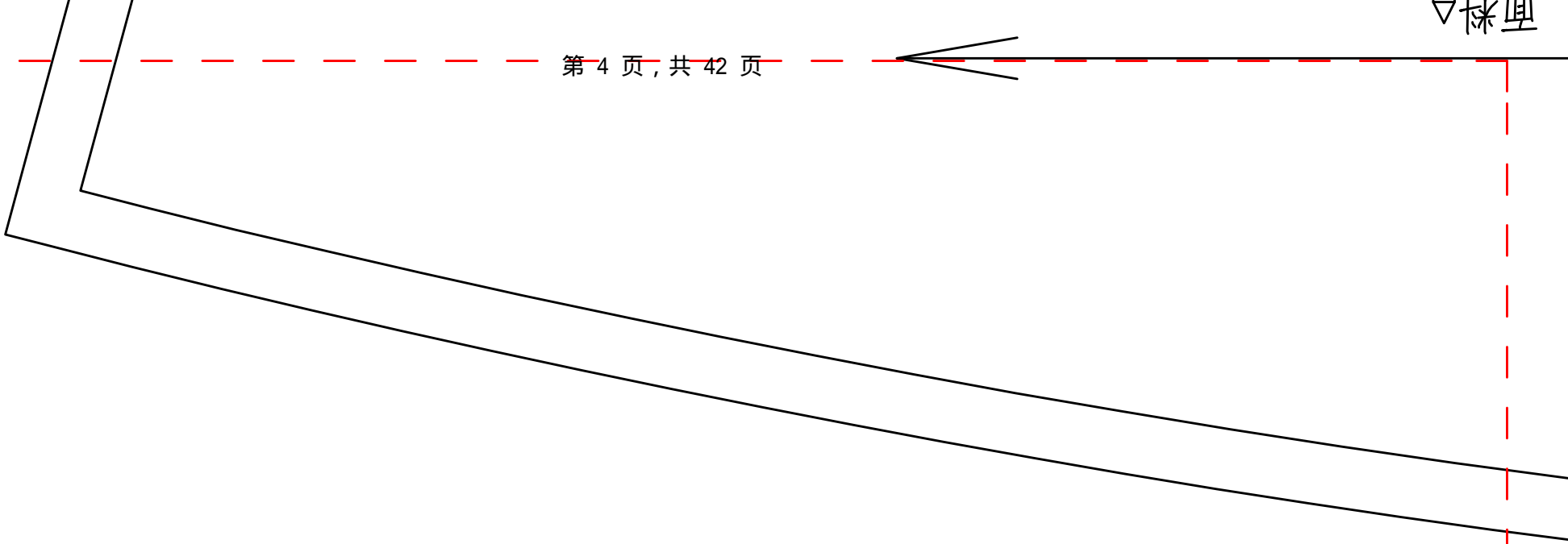
胸围松量18-22CM之间, 裁剪胆布用面布版一圈加放1CM
 注意: 面料用量单位为厘米
 每件另外加15-20厘米本料作为裁减损耗
 缝纫注意说明

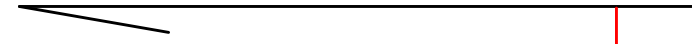


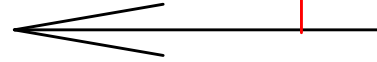
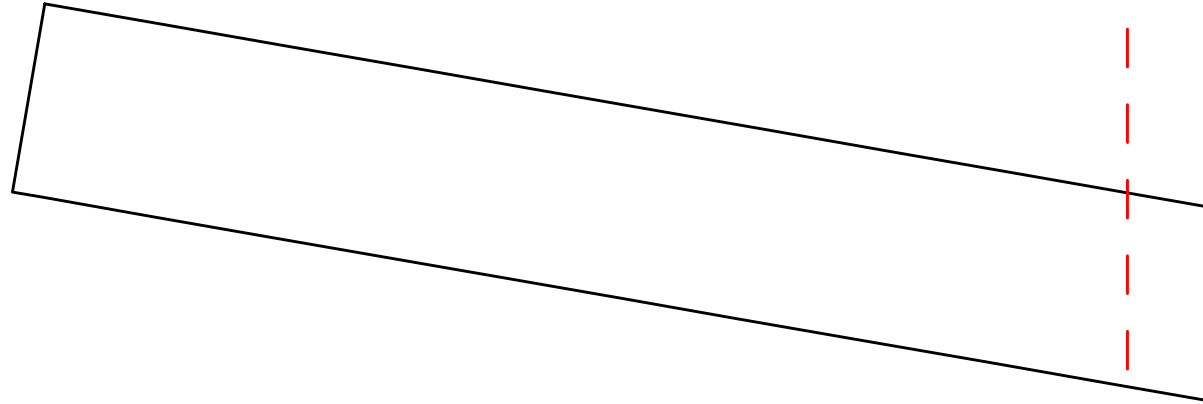




材料







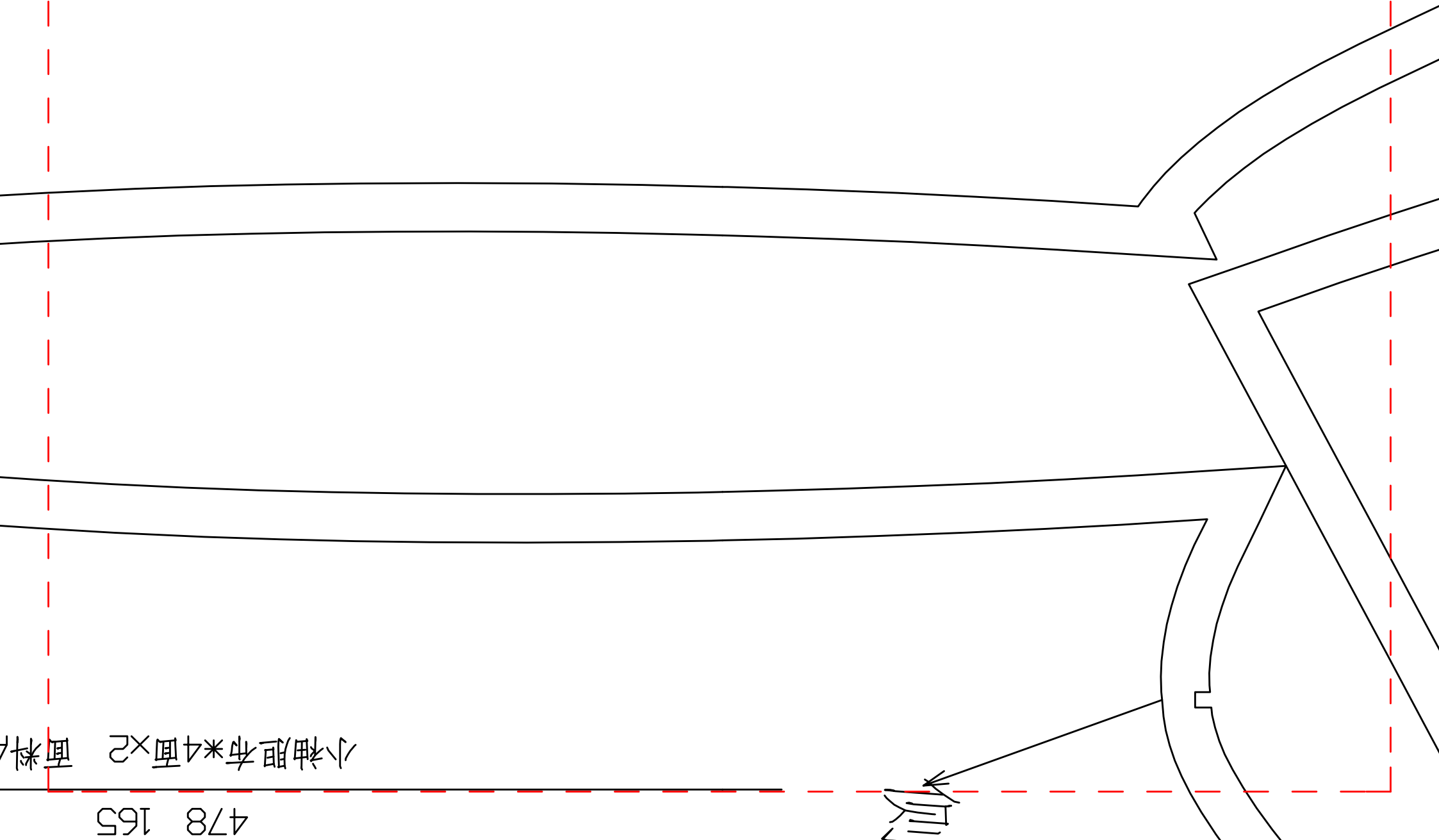
478 165
挂面×2 面料A



充绒12.4克

大袖胆布*4面*2 面料A

478 165



侧

小袖胆布*4面*2 面料A

478 165

胸上，背上
绒少一点，

侧缝

充绒5

面料对折裁剪

478 165

整五

上手臂上点,不然显胖

后片胆布*2面*1 面料A

478 165

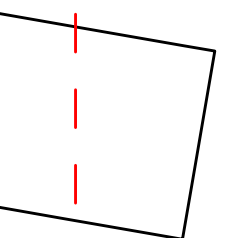
整片充绒388克

充绒的时候
背上, 不然
充绒的背上,
充绒少一点,

前片胆布*4面*2 面料A

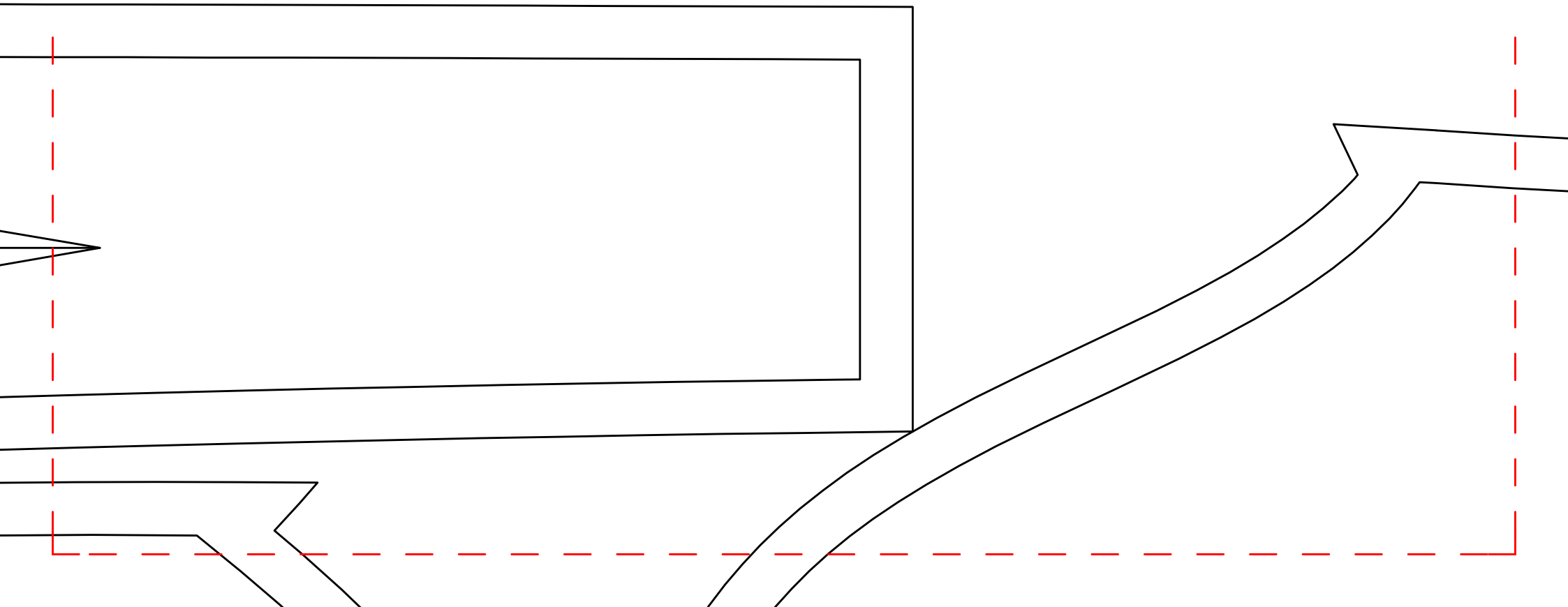
478 165

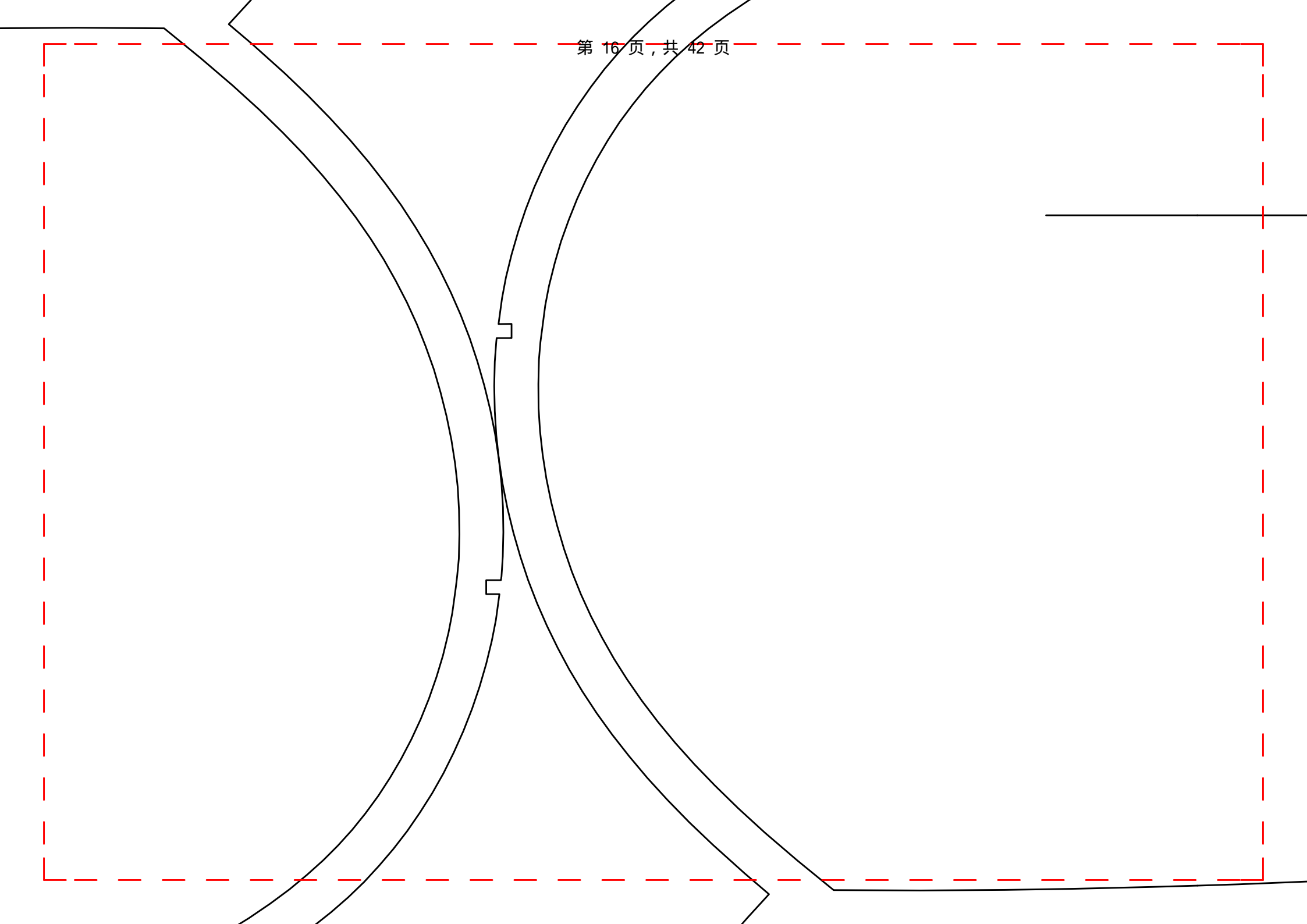
充绒17

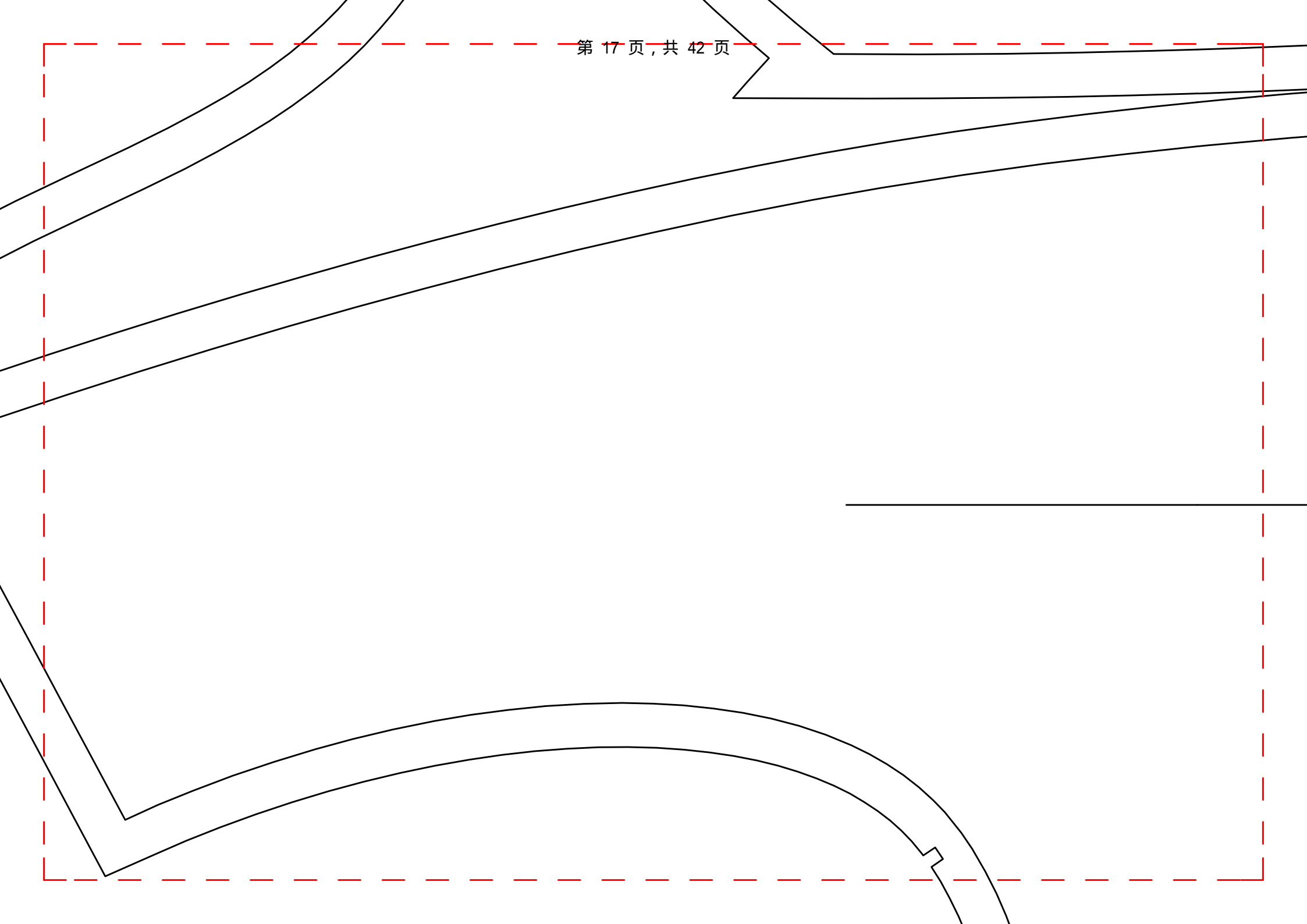


光
手
臂
上
不
然
显
胖

17.4克





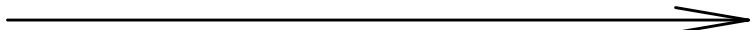


裁胆布的时
一圈多加几
裁充绒的时
背上背

的时候
 加1CM缝位
 点
 时候
 手臂上



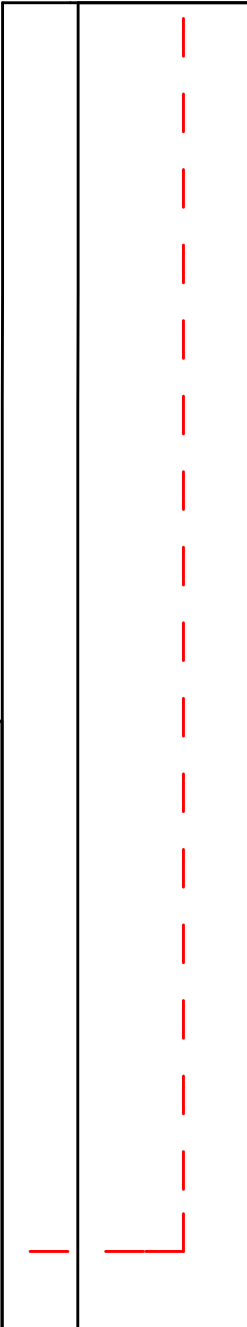
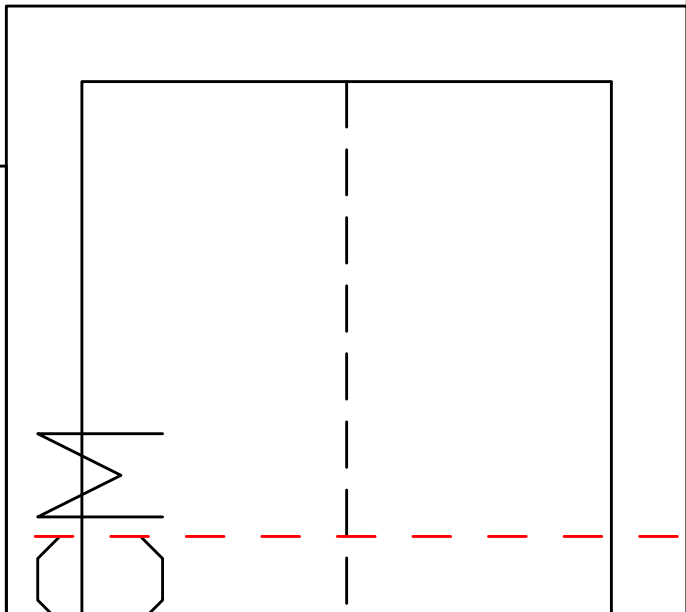
478 165



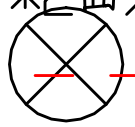
前下袋唇衬*2面x2 面料A



加棉



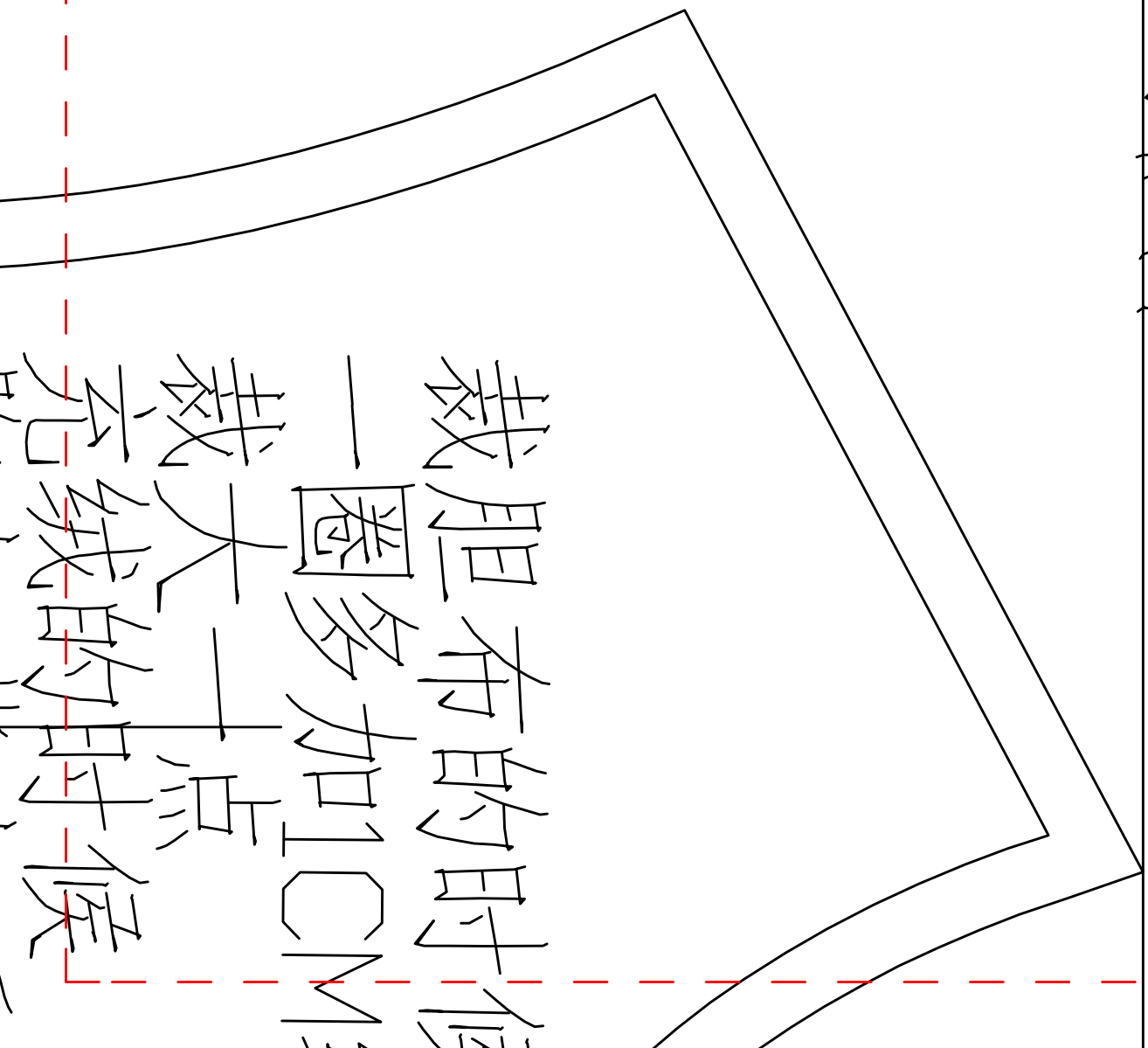
加林



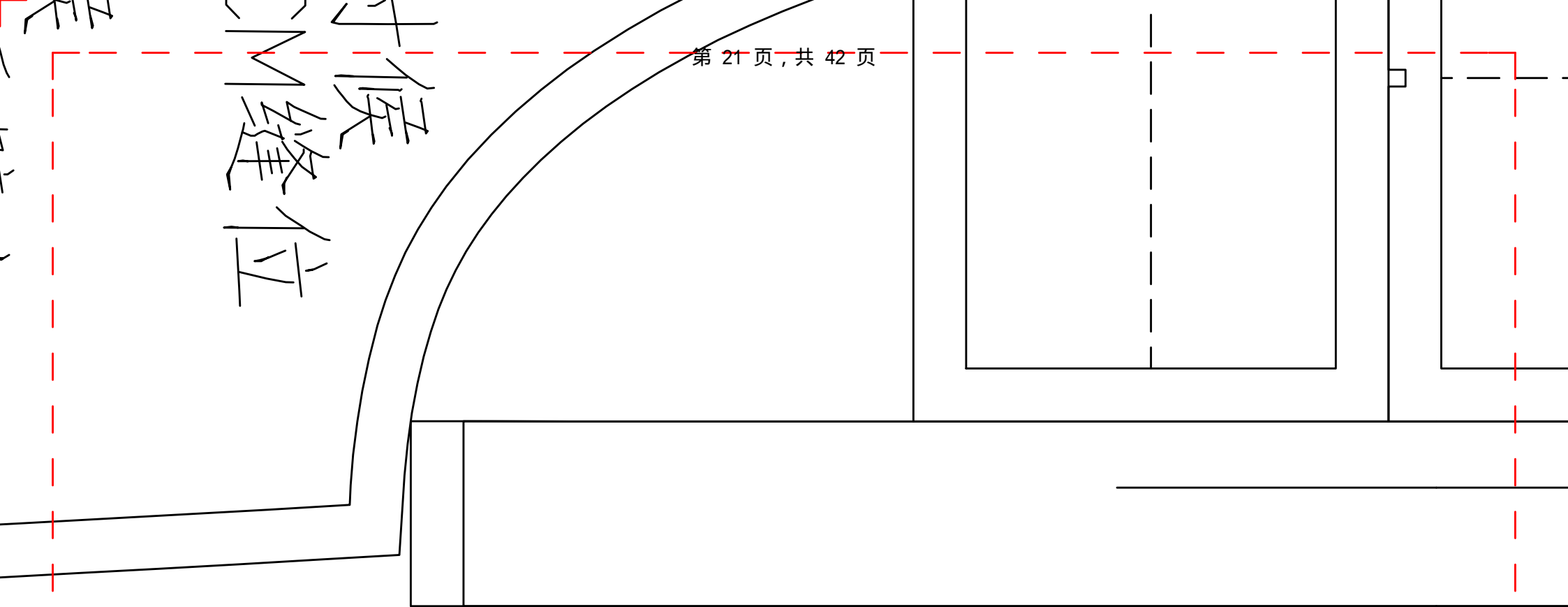
NO.512501
松紧带

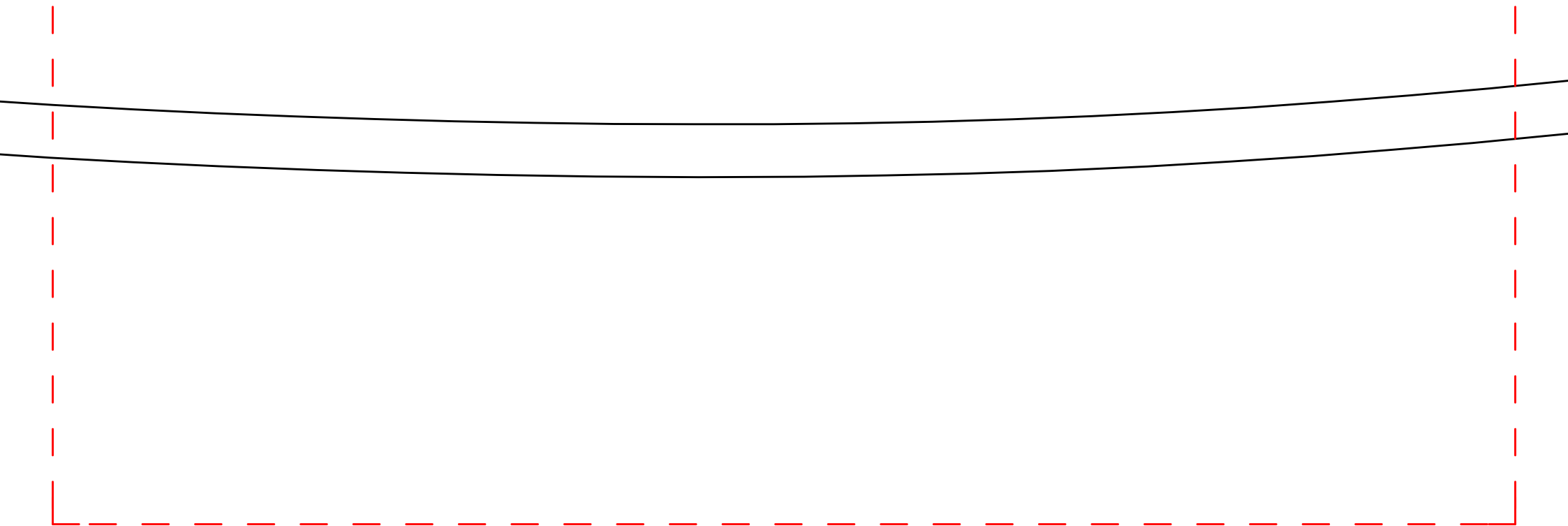
478	165
袖口x2	面料A

裁胆布的时候
一圈多加1CM
裁充绒的时候



时候
缝位





478 165

大袖里x2 里布

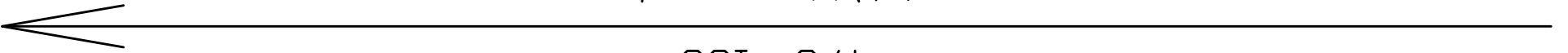
478 165

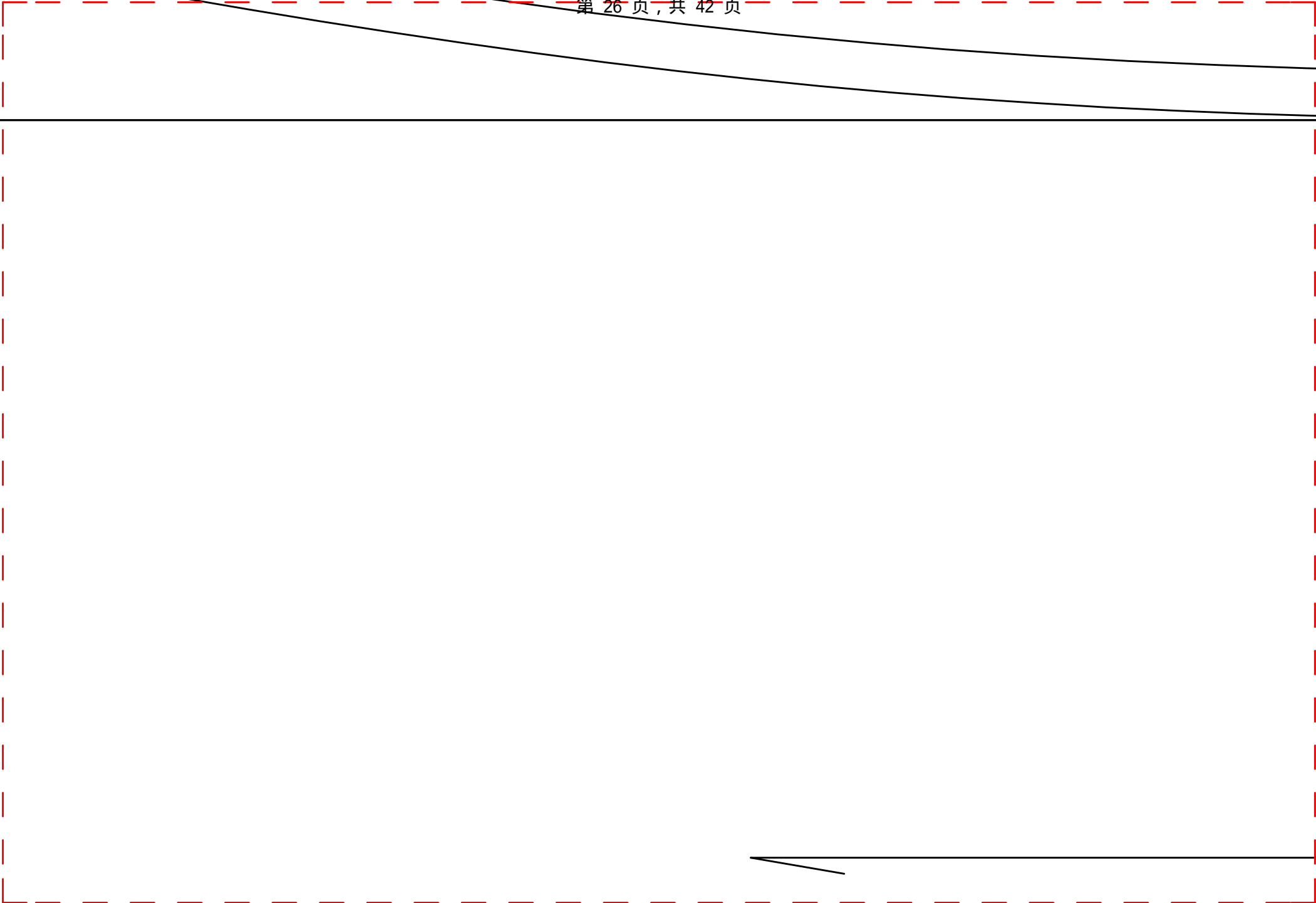
前里x2 里布



小袖里×2 里布

478 165



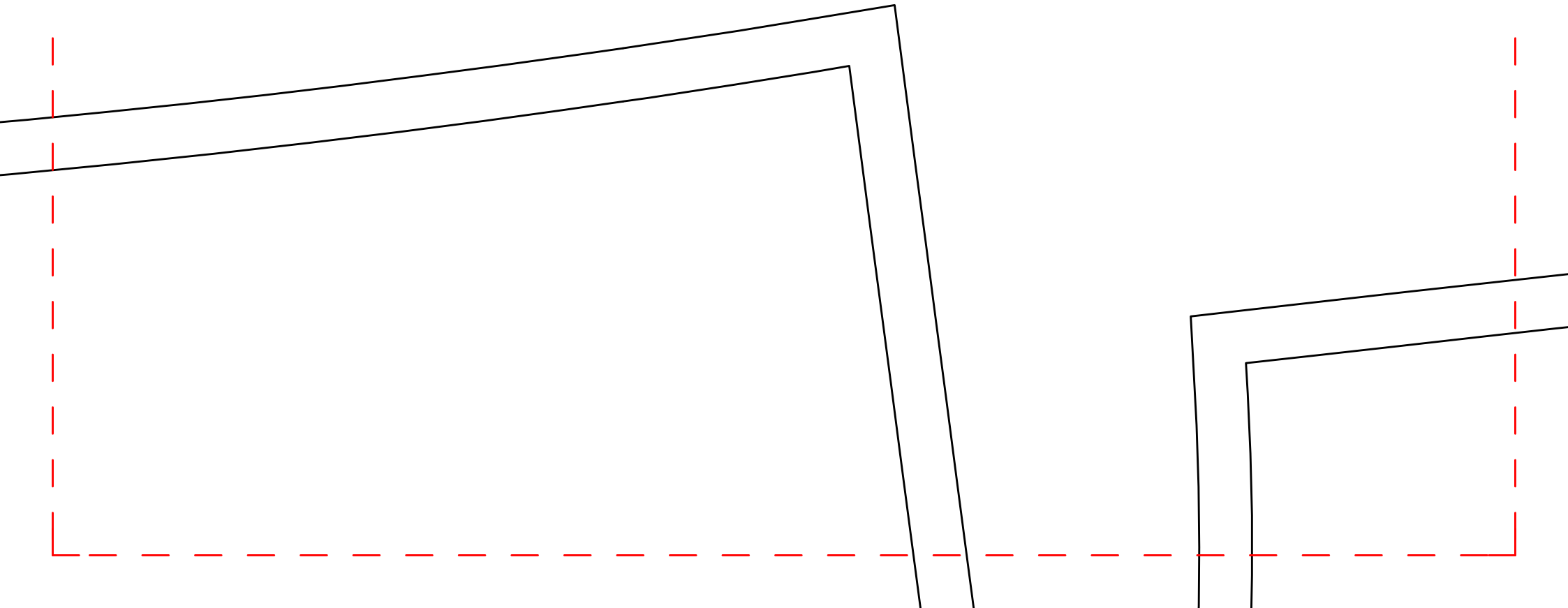


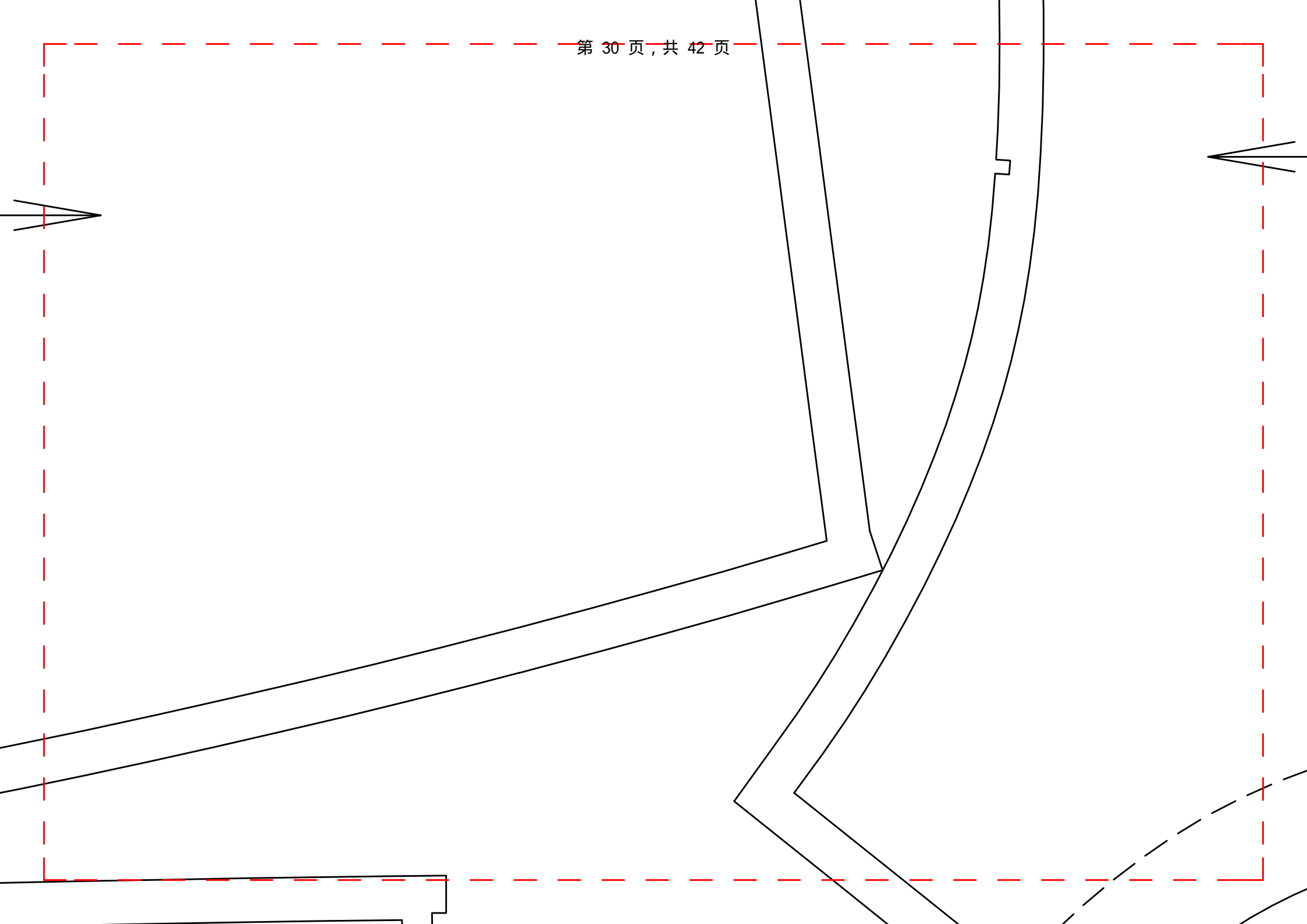
478 165

帽中面x2 面料A

478 165

门禁滚边条x2 面料A





加棉


478 165

帽侧面×4 面料A

侧缝

The image shows a technical drawing of a hat side panel pattern. The pattern is a large, curved shape with several notches and a small rectangular tab. A line with an arrow points from the Chinese characters '侧缝' (side seam) to the inner curve of the pattern. The drawing is enclosed in a red dashed rectangular border. In the top right corner, there are the numbers '478 165' and the text '帽侧面×4 面料A'. At the top center, there is a page number '第 32 页, 共 42 页'.

面料对折裁剪



后里×1 里布

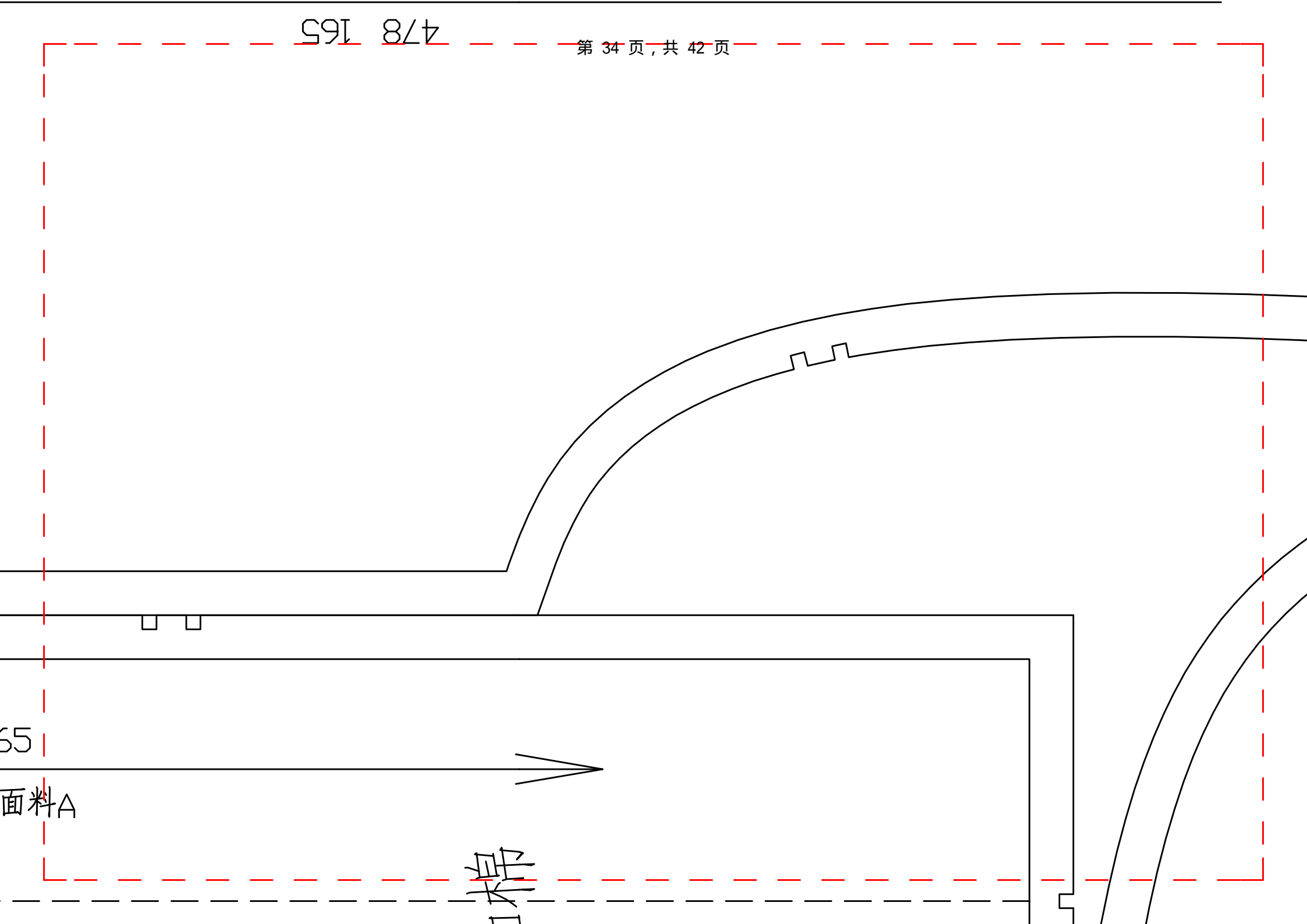
478 165

478 165

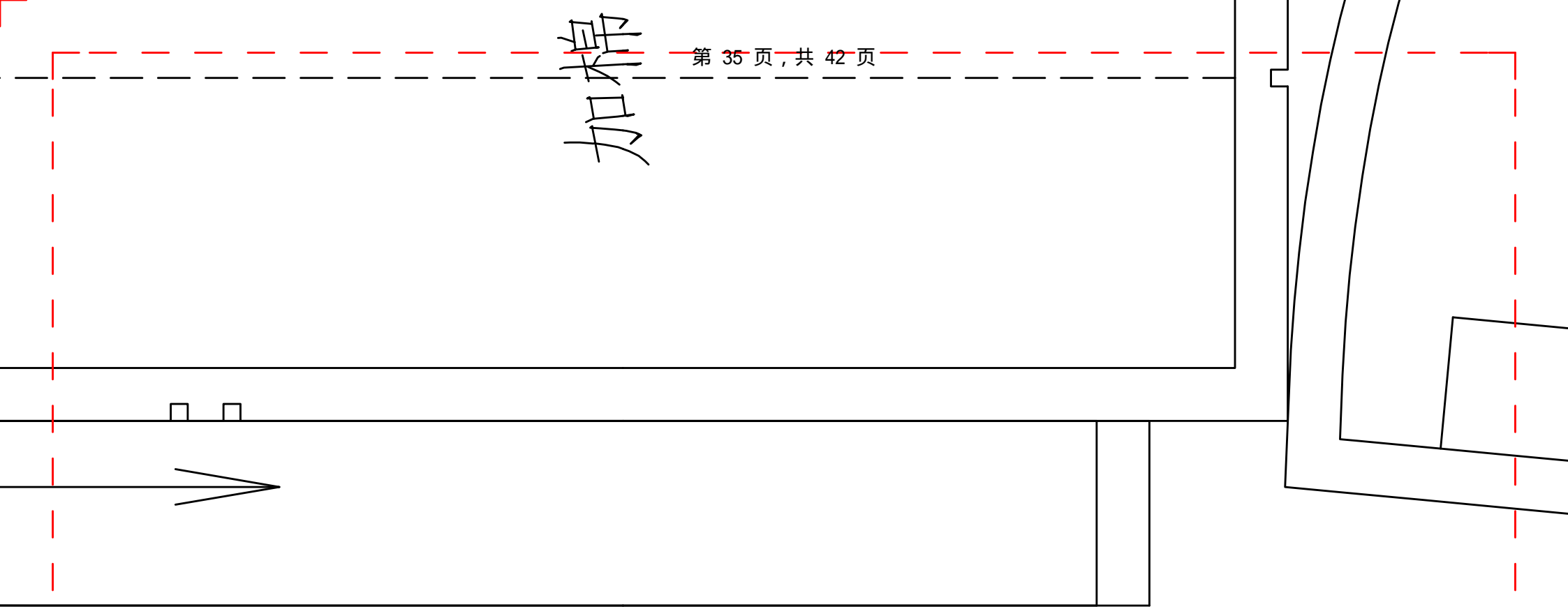
55

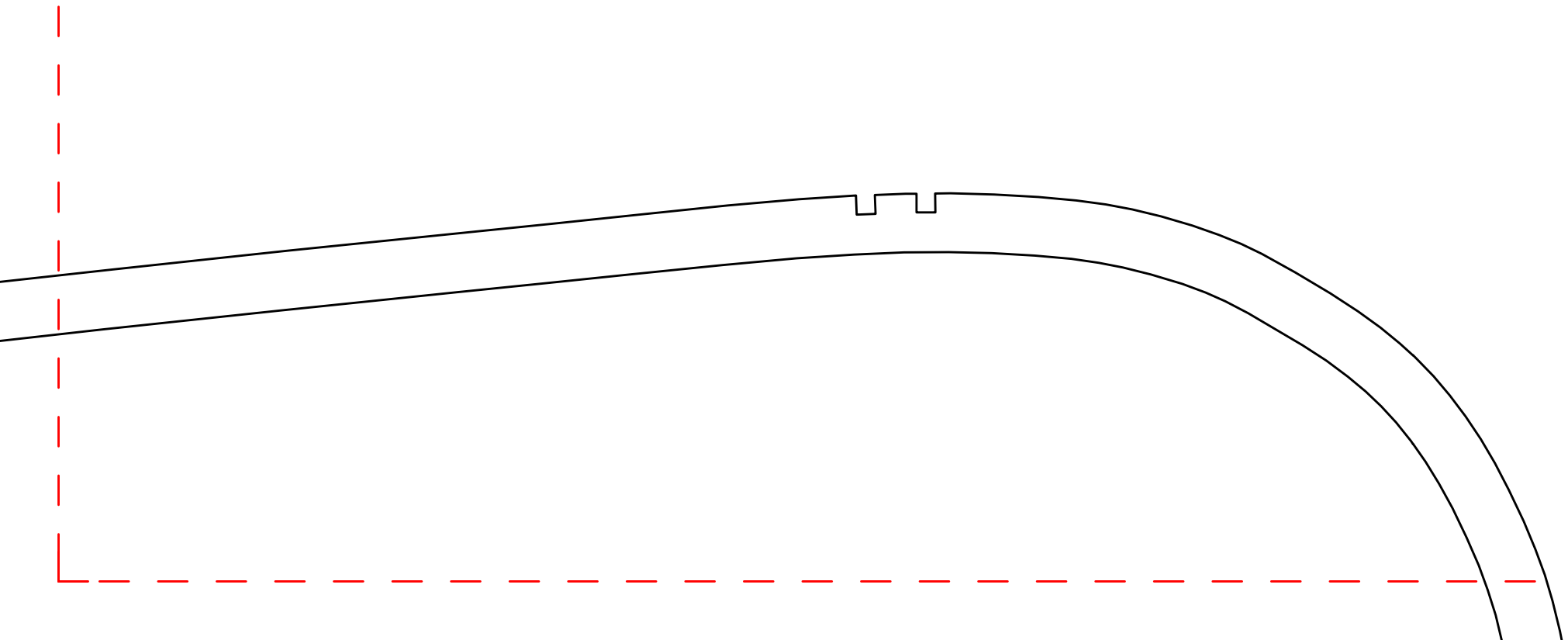
面料A

口棉



加棉

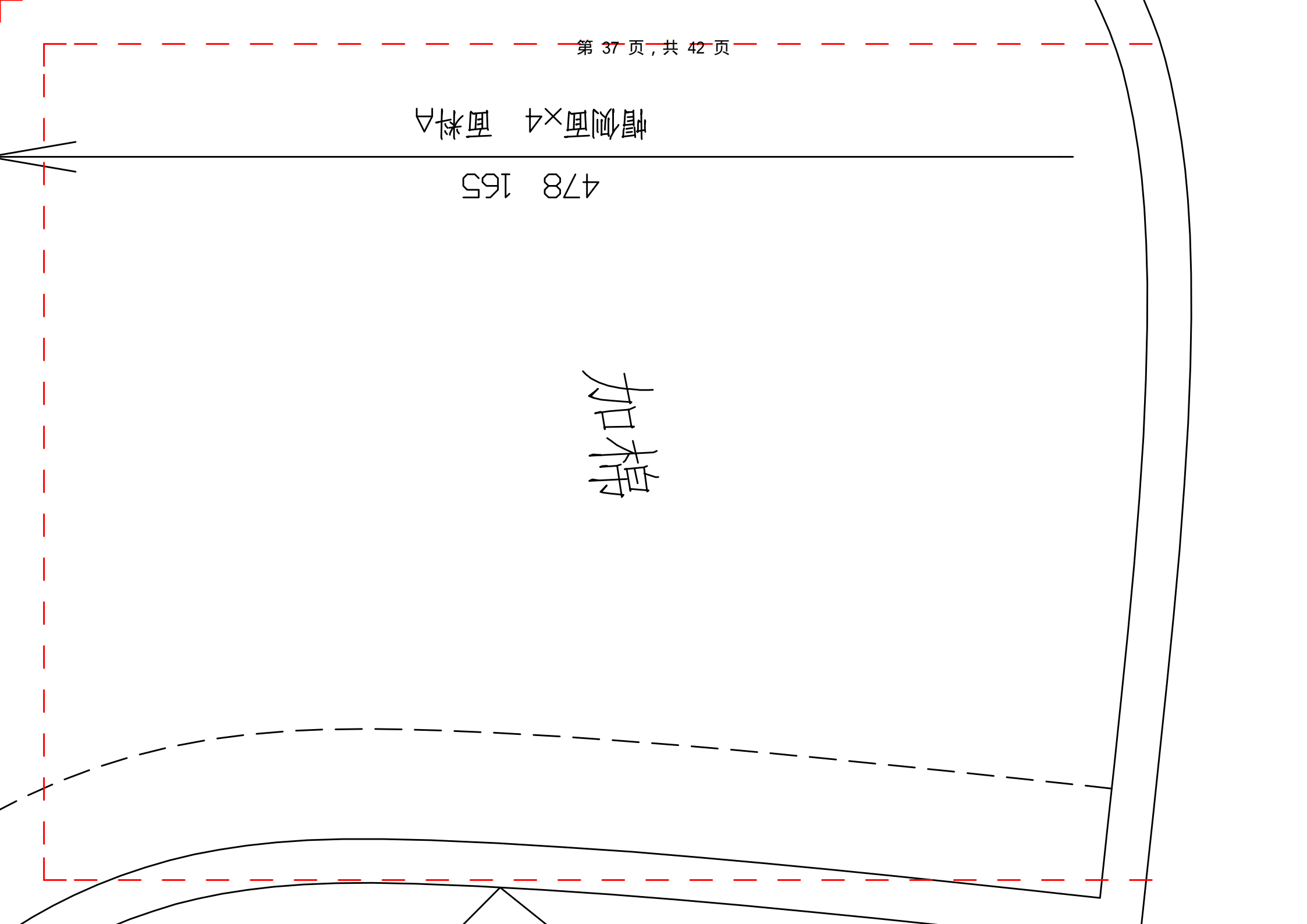


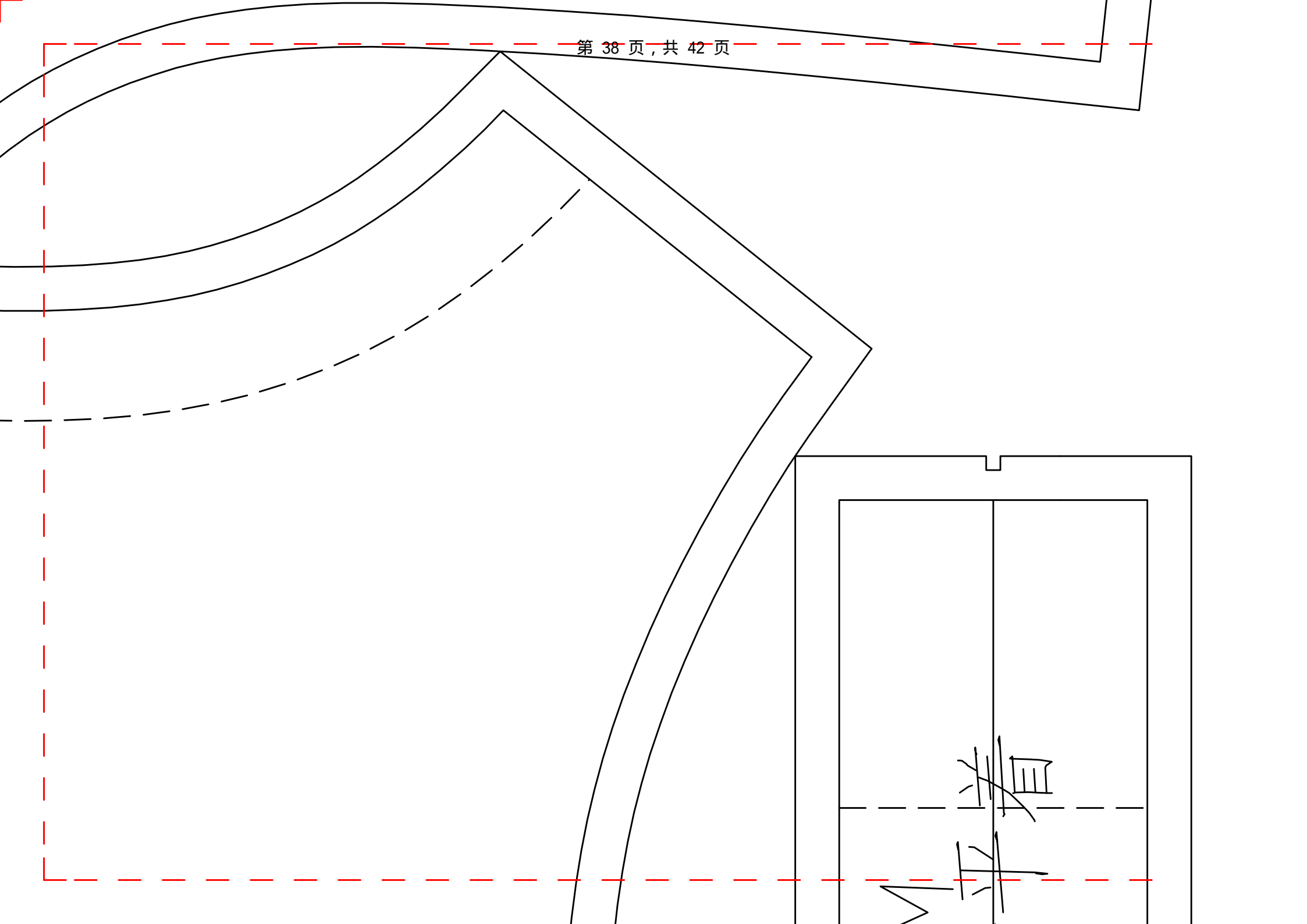


帽侧面×4 面料A

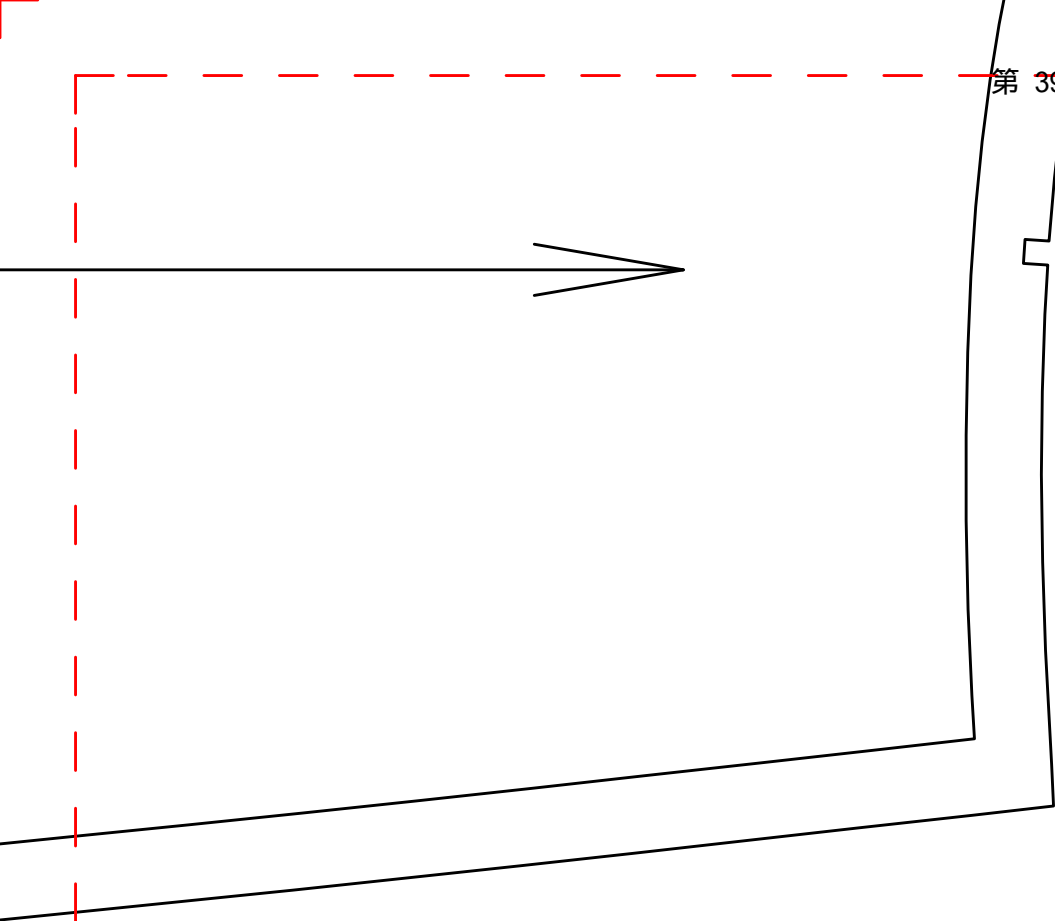
478 165

加棉

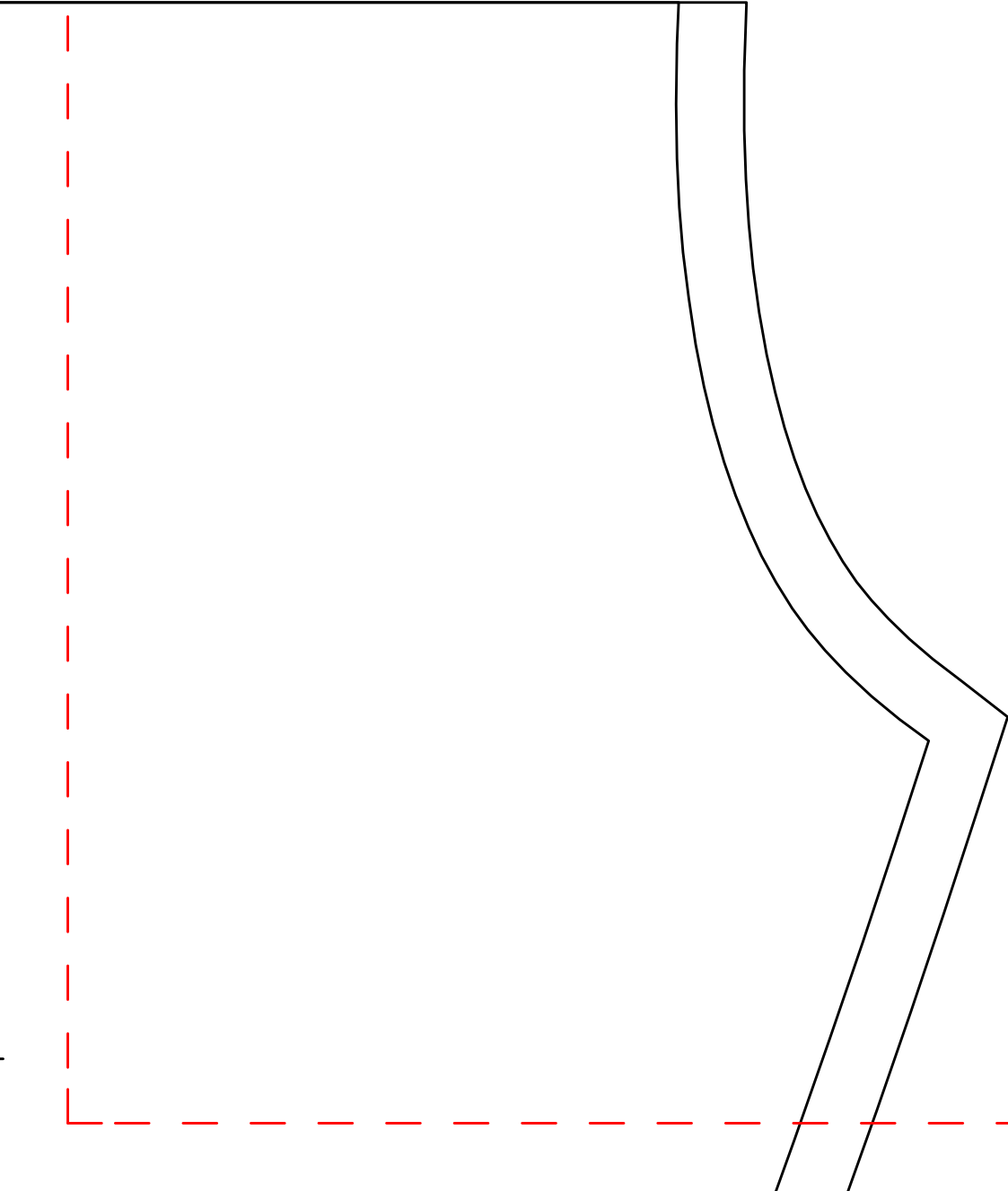




平着



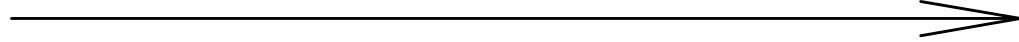
下摆松紧成品87CM
前面虚线位置系平



478	165
<hr/>	
下摆×1	面料A

面料对折裁剪

478 165



袋布里*2面*2 面料A

